The Fujitsu logo, featuring the word "FUJITSU" in a white, sans-serif font with a stylized infinity symbol above the "i".

FUJITSU

AUSTRALIA'S FAVOURITE AIR®

LIFESTYLE RANGE

WALL
MOUNTED

NEW
anywAiR
technology

STYLISH, SLIM AND ELEGANT
HIGH ENERGY EFFICIENCY
5 YEAR FULL PARTS &
LABOUR WARRANTY

WHY CHOOSE FUJITSU?

AUSTRALIA'S FAVOURITE AIR®

Fujitsu is a leading supplier of air conditioners in Australia, with a portfolio to suit both residential and commercial applications.

We focus all of our research and manufacturing strengths into air conditioners which has resulted in the extensive range of world-class, energy efficient, market-leading air conditioners.

That's why we're proud to say we are 'Australia's Favourite Air®'.

PEACE OF MIND

Fujitsu believe in the quality and reliability of every air conditioner we sell. This is why we're happy to provide a 5 year parts and labour warranty across the entire domestic range.



FUJITSU CHANNEL PARTNER NETWORK

Fujitsu have a comprehensive network of retailers and dealers right across Australia. This ensures there is a local stockist in your area to assist you in purchasing a Fujitsu air conditioning system for your home.





WHY CHOOSE FUJITSU?

EXCEPTIONAL AFTER SALES SERVICE

At Fujitsu, we pride ourselves on providing exceptional customer service. Fujitsu General Assist is our in-house customer care and technical support department which was implemented to deliver a high level of support and accessibility to our customers.



Fujitsu General Assist deploys factory trained technicians in Sydney, Melbourne, Brisbane, Adelaide and Perth and provides access to dedicated Service Agents in all other parts of Australia. These technicians are well equipped with the necessary tools and spare parts to enable them to resolve issues onsite, promptly. This offers customers a high first time fix rate and seamless experience.



STATE OF THE ART RESEARCH AND DEVELOPMENT

Our state of the art research and development centre, located at our headquarters in Japan, is equipped with numerous testing facilities simulating a variety of air conditioning operating conditions.

PERFORMANCE TESTING UNDERTAKEN INCLUDES:

- Evaluating the units heating and cooling capacity under varied temperature and humidity conditions.
- Testing the units air volume and air flow distance.
- Measuring units operating noise.
- Evaluating units durability to withstand outdoor weather extremes.

This rigorous testing is aimed at meeting Fujitsu's high standard of quality and reliability.



LIFESTYLE RANGE

WALL MOUNTED



ASTG09/12KMCB
ASTG07/09/12CMB



ASTG18/22/24KMCB
ASTG18/24CMB



ASTG30/34KMTB
ASTG30/34CMTB

STYLISH, SLIM AND ELEGANT

MODEL RANGE

Fujitsu General's KM and CM series have a stylish design across the range, to blend in seamlessly with your home's decor. The new models also feature Wi-Fi mobile control, allowing you superior control, comfort and convenience.

EASE OF USE

The KM and CM range is accompanied by a simple and easy to use controller, giving you simple control of your climate, right at your fingertips. With features such as low noise mode, economy operation and program timers, you can tailor your comfort needs at the touch of a button.

ENERGY EFFICIENCY

The KM and CM series are amongst the most energy efficient air conditioners Fujitsu has designed. With built-in features such as high efficiency DC componentry, Power Diffusers, and High Density Multi-path Heat Exchangers, these air conditioners use less power than ever before.

With some models reaching a 5 star energy rating, year round comfort can be more affordable for you and your family.



ASTG09KMCB

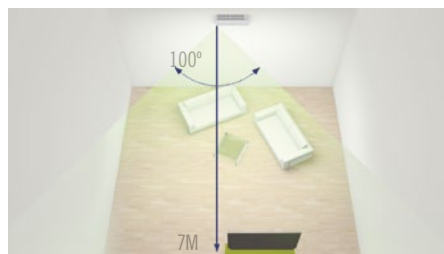
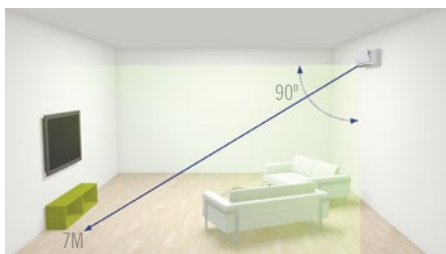


ASTG09KMCB

HUMAN SENSOR CONTROL

All models in the KM and CM series contain human sensor control, an intelligent feature which detects movement of people to deliver optimum efficiency and temperature control. When in operation, if the sensor detects no movement in a room after 20 minutes, the air conditioner will be switched to energy saving operation, modifying the temperature to minimise energy consumption.

When movement is detected within the room, the air conditioner reverts to its previous setting.



WI-FI MOBILE CONTROL



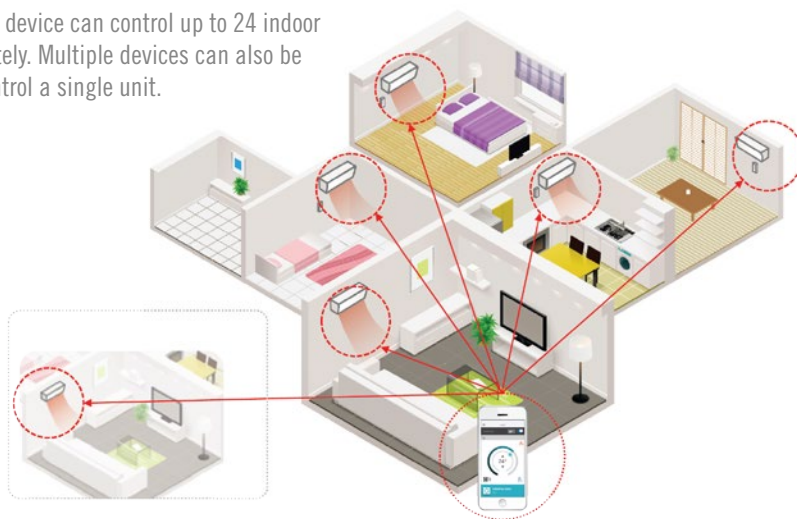
LIFESTYLE RANGE NOW FEATURING BUILT-IN WIRELESS LAN INTERFACE

By using our built-in WLAN adaptor and FGLair app, you can control the temperature of your home anytime and anywhere!



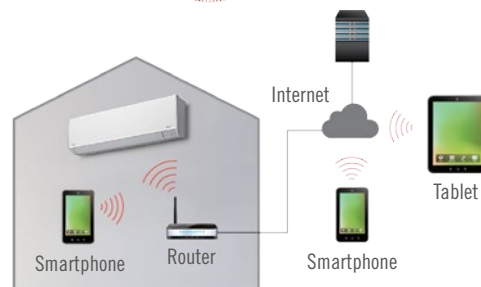
EASY OPERATION ANYWHERE BY SMARTPHONE AND TABLET

One mobile device can control up to 24 indoor units remotely. Multiple devices can also be used to control a single unit.



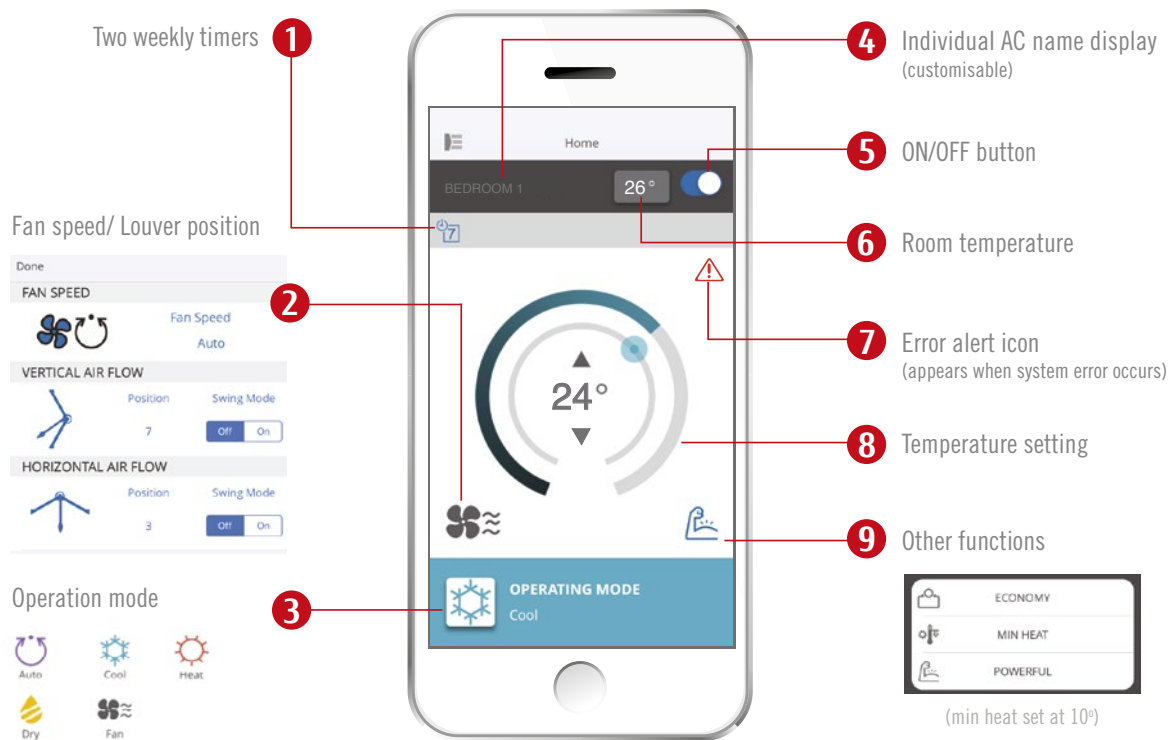
1. You will require an internet connection on your mobile device to control your unit remotely via the FGLair app.

2. Installing the Fujitsu Wi-Fi technology requires the presence of an existing Wi-Fi internet connection and router within your home.



*Router required to be compatible to wireless standard IEEE 8011.2 b/g/n on 2.4GHz frequency. Air conditioner needs to remain connected to the network and internet for mobile control to work. Mobile devices require IOS 8.0 or later/ Android 4.1 or later. Tablet/smartphone, modem and internet connection are not included.

USER FRIENDLY INTERFACE



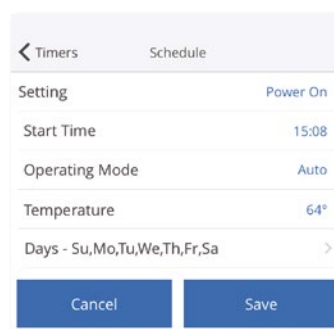
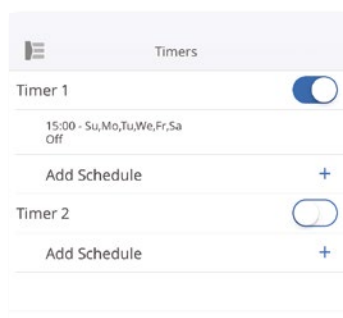
EMAIL NOTIFICATIONS

Opt to receive error notifications via email and SMS.



WEEKLY TIMERS

You can set and check two timer schedules remotely.



anywAiR
technology

Introducing the Fujitsu General anywAiR technology.

The new Fujitsu General Lifestyle wall mounted air conditioning units have a built-in wireless LAN interface allowing users to remotely control the indoor comfort of their home or office through the free, easy-to-use **FGLair app**. Customising individual room temperatures, turning units on or off and setting up timers can be done anytime, anywhere.*

FEATURES*

COMFORT FUNCTIONS



10° C HEAT OPERATION

The room temperature can be set to go no lower than 10°C, ensuring that the room does not get too cold when not occupied.



UP / DOWN SWING LOUVRE

The up / down louvre automatically swings up and down.



RIGHT / LEFT SWING LOUVRE

The right / left louvre automatically swings in either direction.



DOUBLE SWING AUTOMATIC*

Complex swing action of the louvres enables them to swing automatically in both horizontal and vertical directions.



AUTOMATIC LOUVRE

The position of the louvres is set automatically to match the operating mode. It is also possible to adjust the louvres using the remote control.



AUTO SHUT LOUVRE

The auto shut louvres close or open automatically when the unit stops or starts.



AUTOMATIC AIR FLOW ADJUSTMENT

When auto mode is selected for the fan, the micro-processor adjusts the airflow to follow changes in room temperature.



AUTO RESTART

Should there be temporary loss of power, the unit will automatically restart itself in the same operating mode, once the power is restored.



AUTO-CHANGEOVER

The unit automatically switches between heating and cooling modes based on the temperature setting and room temperature.



POWERFUL MODE

This mode will operate the air conditioner at maximum capacity for 20 minutes, providing comfort faster than ever before.

CONVENIENCE FUNCTIONS



SLEEP TIMER

The micro-processor gradually changes the room temperature, allowing you to sleep comfortably at night.



PROGRAM TIMER

This timer allows selection of one of four options; ON, OFF, ON -> OFF, or OFF -> ON.



FILTER SIGN

Select appropriate intervals for displaying the filter sign on the indoor unit according to the estimated amount of dust in the air of the room.



ON-OFF TIMER

ON-OFF timer can be set to operate once every 24 hours.



WEEKLY TIMER

Different ON-OFF times can be set for up to 7 days.



WEEKLY + SETBACK TIMER

Weekly + Setback timer can set temperature for two time spans and for each day of the week.



LOW NOISE MODE

The compressor speed and the outdoor unit fan speed are limited to reduce the operational noise.



SUPER QUIET MODE

The indoor units fan can operate at a low speed to produce quieter operation.



WI-FI MOBILE CONTROL

Built-in wireless LAN interface allows the air conditioner to be controlled remotely using a mobile device and our FGLair App.



ENERGY EFFICIENT FUNCTIONS



HUMAN SENSOR

The human sensor detects movement so that when occupants leave the room, the air conditioner switches into energy saving mode after 20 minutes should no movement be detected. When occupants reenter the room, it returns to normal operation.



V-PAM

V-PAM inverter technology increases the maximum output of the compressor significantly and enables high power and high efficiency.



i-PAM

i-PAM inverter technology enables high output and high efficiency performance.



DEMAND CONTROL

This product is designed to be compatible with Air Conditioning Demand Response program. When your electricity supplier activates one of the three modes, the air conditioner switches over to the appropriate operation.



ECONOMY MODE

The economy operation will save energy in heating, cooling and dry mode. Economy operation is set by pressing the button on the remote control.

CLEAN FUNCTIONS



WASHABLE PANEL

Dust which accumulates on the air conditioner can be easily cleaned with a damp cloth.



APPLE-CATECHIN FILTER

Fine dust, invisible mould spores and harmful microorganisms are absorbed onto the filter by static electricity and further growth is inhibited and deactivated by the polyphenol ingredient extracted from apples.



LONG-LIFE ION DEODORISATION FILTER

The filter deodorises by powerfully decomposing absorbed odours using the oxidising and reducing effects of ion generated by the ultra-fine-particle ceramic.

*Note: not all features available on all models, please refer to features checklist.



FEATURES CHECKLIST

	REVERSE CYCLE			COOLING ONLY		
FEATURES	ASTG09/12KMCB	ASTG18/22/24KMCB	ASTG30/34KMTB	ASTG07/09/12CMCB	ASTG18/24CMCB	ASTG30/34CMTB
COMFORT FUNCTIONS						
Up / Down swing louvre	✓	✓	✓	✓	✓	✓
Right / Left swing louvre		✓	✓		✓	✓
Automatic louvre	✓	✓	✓	✓	✓	✓
Auto shut louvre	✓	✓	✓	✓	✓	✓
Double auto swing louvres		✓	✓		✓	✓
Automatic air flow adjustment	✓	✓	✓	✓	✓	✓
Auto restart	✓	✓	✓	✓	✓	✓
Auto-changeover	✓	✓	✓	✓	✓	✓
10°C HEAT operation	✓	✓	✓			
Powerful mode	✓	✓	✓	✓	✓	✓
CONVENIENCE FUNCTIONS						
NEW Wi-Fi mobile control	✓	✓	✓	✓	✓	✓
Low noise mode	✓	✓	✓	✓	✓	✓
Super quiet mode	✓	✓	✓	✓	✓	✓
Sleep timer	✓	✓	✓	✓	✓	✓
Program timer	✓	✓	✓	✓	✓	✓
Weekly timer	✓	✓	✓	✓	✓	✓
Weekly + setback timer	o	o	o	o	o	o
On-off timer	✓	✓	✓	✓	✓	✓
Filter sign	✓	✓	✓	✓	✓	✓
ENERGY EFFICIENT FUNCTIONS						
i-PAM / V-PAM control models	✓	✓	✓	✓	✓	✓
Demand Control	✓	✓	✓	✓	✓	✓
Human sensor	✓	✓	✓	✓	✓	✓
Economy mode	✓	✓	✓	✓	✓	✓
CLEAN FUNCTIONS						
Long-life ion deodorisation filter	✓	✓	✓	✓	✓	✓
Apple-catechin filter	✓	✓	✓	✓	✓	✓
Washable panel	✓	✓	✓	✓	✓	✓

o Optional feature when using a wired controller and communication kit.

SPECIFICATIONS & FEATURES

Products in this brochure contain R32 refrigerant. Please refer to specifications before installation and servicing this product. Only persons and / or companies qualified and experienced in the installation, service and repair of refrigerant products should be permitted to do so. The purchaser must ensure that the person and / or company who is to install, service or repair this air conditioner has qualifications and experience in refrigerant products. Suitable access for warranty and service is required. Future improvements, specifications, designs of product and availability are subject to change without notice. Please check with your dealer.

ALL CAPACITY AND ENERGY EFFICIENCY RATINGS ARE BASED ON AS / NZS3823.2.

COOLING	Indoor temperature	27°C DB / 19°C WB
	Outdoor temperature	35°C DB

HEATING	Indoor temperature	20°C DB
	Outdoor temperature	7°C DB / 6°C WB

Running current is at rated conditions (AS3823) and does not include compressor start-up or variations in power supply and load conditions.

INDOOR UNITS

NEW



ASTG09/12KMCB and ASTG07/09/12CMTB
with standard controller



ASTG18/22/24KMCB and ASTG18/24CMTB
with standard controller



ASTG30/34KMTB and ASTG30/34CMTB
with standard controller



OUTDOOR UNITS



AOTG09/12KMCB
AOTG07/09/12CMTB



AOTG18/22/24KMCB
AOTG18/24CMTB



AOTG30KMTB
AOTG30CMTB



AOTG34KMTB
AOTG34CMTB

AVAILABLE OPTIONAL CONTROLLERS



Backlit Wired Remote Controller*
(High grade)



Simple Wired Controller*

*Optional Communication Kit required for connection.

PRODUCT SPECIFICATIONS

			REVERSE CYCLE						
Model No.	Indoor Unit		ASTG09KMCB	ASTG12KMCB	ASTG18KMCB	ASTG22KMCB	ASTG24KMCB	ASTG30KMTB	ASTG34KMTB
	Outdoor Unit		AOTG09KMCB	AOTG12KMCB	AOTG18KMCB	AOTG22KMCB	AOTG24KMCB	AOTG30KMTB	AOTG34KMTB
Operation Type			Reverse Cycle	Reverse Cycle	Reverse Cycle	Reverse Cycle	Reverse Cycle	Reverse Cycle	Reverse Cycle
Power Source	V / Ph / HZ		240 / 1 / 50	240 / 1 / 50	240 / 1 / 50	240 / 1 / 50	240 / 1 / 50	240 / 1 / 50	240 / 1 / 50
Capacity	Cooling	kW	2.5 (0.9-3.6)	3.5 (0.9-4.10)	5.0 (1.00-6.50)	6.0 (1.10-7.50)	7.10 (1.10-8.30)	8.5 (2.9-10.5)	9.4 (2.9-11.2)
	Heating	kW	3.2 (0.9-5.30)	3.7 (0.9-5.6)	6.00 (1.05-8.30)	7.20 (1.10-9.70)	8.00 (1.10-10.60)	9.00 (2.2-11.2)	10.3 (2.7-11.7)
Input Power	Cooling	kW	0.51 (0.25-1.14)	0.86 (0.25-1.38)	1.22 (0.21-2.20)	1.59 (0.21-2.85)	2.01 (0.21-2.90)	2.46 (0.58-3.85)	2.78 (0.59-4.03)
	Heating	kW	0.65 (0.25-1.60)	0.81 (0.25-1.70)	1.42 (0.20-3.10)	1.77 (0.20-3.40)	2.12 (0.20-3.68)	2.34 (0.50-4.01)	2.84 (0.6-4.24)
EER	Cooling	kW / kW	4.90	4.07	4.10	3.77	3.53	3.45	3.38
COP	Heating	kW / kW	4.92	4.57	4.23	4.07	3.77	3.84	3.63
Star Rating	Cooling		5	3.5	3.5	3	2.5	2	2
	Heating		5	4.5	3.5	3.5	3	3	2.5
Running Current	Cooling / Heating	Amps	2.7 / 3.3	4.2 / 4.0	5.2 / 6.0	6.7 / 7.5	8.5 / 9.0	10.4 / 10.1	11.7 / 12.9
Moisture Removal		L / Hr	1.3	1.8	2.6	2.7	2.7	2.5	3.5
Noise Level	Indoor Sound Pressure (High / Quiet)	dBA	40 / 21	42 / 21	46 / 29	48 / 32	49 / 32	51 / 33	52 / 33
	Outdoor Sound Pressure	dBA	47	49	47	49	52	50	50
	Outdoor Sound Power	dBA	64	67	65	70	70	67	67
Air Circulation (Indoor - High Fan)		l / sec	194	200	258	278	311	389	389
Net Dimensions H x W x D	Indoor Unit	mm	268 x 840 x 203	268 x 840 x 203	295 x 940 x 270	295 x 940 x 270	295 x 940 x 270	340 x 1,150 x 280	340 x 1,150 x 280
		kgs	8.5	8.5	14	14	14	18	18
	Outdoor Unit	mm	540 x 790 x 290	540 x 790 x 290	620 x 790 x 290	620 x 790 x 290	620 x 790 x 290	830 x 900 x 330	914 x 970 x 370
		kgs	34	34	40	40	40	61	75
Piping Connections (Liquid / Suction)		mm	ø6.35 / ø9.52	ø6.35 / ø9.52	ø6.35 / ø12.70	ø6.35 / ø12.70	ø6.35 / ø12.70	ø9.52 / ø15.88	ø9.52 / ø15.88
Max. Pipe Length (Precharged Length)		m	20 (20)	20 (20)	30 (20)	30 (20)	30 (20)	75 (20)	75 (30)
Max. Height Difference		m	15	15	20	20	20	30	30
Operation Range	Cooling	°CDB	10 to 46	10 to 46	-10 to 46	-10 to 46	-10 to 46	-10 to 46	-10 to 46
	Heating	°CDB	-15 to 24	-15 to 24	-15 to 24	-15 to 24	-15 to 24	-15 to 24	-15 to 24
Refrigerant			R32	R32	R32	R32	R32	R32	R32

			COOLING ONLY						
Model No.	Indoor Unit		ASTG07CMCB	ASTG09CMCB	ASTG12CMCB	ASTG18CMCB	ASTG24CMCB	ASTG30CMTB	ASTG34CMTB
	Outdoor Unit		AOTG07CMCB	AOTG09CMCB	AOTG12CMCB	AOTG18CMCB	AOTG24CMCB	AOTG30CMTB	AOTG34CMTB
Operation Type			Cooling Only	Cooling Only	Cooling Only	Cooling Only	Cooling Only	Cooling Only	Cooling Only
Power Source	V / Ph / HZ		240 / 1 / 50	240 / 1 / 50	240 / 1 / 50	240 / 1 / 50	240 / 1 / 50	240 / 1 / 50	240 / 1 / 50
Capacity	Cooling	kW	2.1 (0.9-3.5)	2.5 (0.9-3.6)	3.5 (0.9-4.1)	5.0 (1.0-6.5)	7.1 (1.1-8.3)	8.5 (2.9-10.5)	9.4 (2.9-11.2)
	Heating	kW	-	-	-	-	-	-	-
Input Power	Cooling	kW	0.42 (0.25-1.04)	0.51 (0.25-1.14)	0.86 (0.25-1.38)	1.22 (0.21-2.20)	2.01 (0.21-2.90)	2.46 (0.58-3.85)	2.78 (0.59-4.03)
	Heating	kW	-	-	-	-	-	-	-
EER	Cooling	kW / kW	5.00	4.9	4.07	4.1	3.53	3.45	3.38
COP	Heating	kW / kW	-	-	-	-	-	-	-
Star Rating	Cooling		5.5	5	3.5	3.5	2.5	2	2
	Heating		-	-	-	-	-	-	-
Running Current	Cooling / Heating	Amps	2.2	2.7	4.2	5.2	8.5	10.4	11.7
Moisture Removal		L / Hr	1	1.3	1.8	2.6	2.7	2.5	3.5
Noise Level	Indoor Sound Pressure (High / Quiet)	dBA	38 / 21	40 / 21	42 / 21	46 / 29	49 / 32	51 / 32	51 / 32
	Outdoor Sound Pressure	dBA	44	47	49	47	52	51	51
	Outdoor Sound Power	dBA	60	64	67	65	70	66	65
Air Circulation (Indoor - High Fan)		l / sec	172	194	200	258	311	389	389
Net Dimensions H x W x D	Indoor Unit	mm	268 x 840 x 203	268 x 840 x 203	268 x 840 x 203	295 x 940 x 270	295 x 940 x 270	340 x 1,150 x 280	340 x 1,150 x 280
		kgs	8.5	8.5	8.5	14	14	18	18
	Outdoor Unit	mm	540 x 790 x 290	540 x 790 x 290	540 x 790 x 290	620 x 790 x 290	620 x 790 x 290	830 x 900 x 330	914 x 970 x 370
		kgs	33	33	33	39	39	61	74
Piping Connections (Liquid / Suction)		mm	6.35 / 9.52	6.35 / 9.52	6.35 / 9.52	6.35 / 12.7	6.35 / 12.7	9.52 / 15.88	9.52 / 15.88
Max. Pipe Length (Precharged Length)		m	20 (20)	20 (20)	20 (20)	30 (20)	30 (20)	75 (20)	75 (30)
Max. Height Difference		m	15	15	15	20	20	30	30
Operation Range	Cooling	°CDB	10 to 46	10 to 46	10 to 46	-10 to 46	-10 to 46	-10 to 46	-10 to 46
	Heating	°CDB	—	—	—	—	—	—	—
Refrigerant			R32	R32	R32	R32	R32	R32	R32

FUJITSU

AUSTRALIA'S FAVOURITE AIR®



If you are looking for an air conditioner that you can trust to keep you comfortable all year round, my advice is to look no further than a Fujitsu.

They are efficient, effective, and beautifully designed, I should know, I bought one myself.

So for an air conditioner you can trust, go with the name you know, **Fujitsu, It's Australia's Favourite Air®.**



Mark Taylor



FUJITSU GENERAL AUSTRALIA

ABN 55 001 229 554 • A SUBSIDIARY OF FUJITSU GENERAL LIMITED

www.fujitsugeneral.com.au

EMAIL contact@fujitsugeneral.com.au

PHONE 1300 882 201

Proud sponsors of:



For every air conditioner sold, a donation is made to the Sporting Chance Cancer Foundation.



FGALRW07/17